



BEEF & DAIRY CATTLE

2 - 4 oz. per 1000# body weight per head per day for maintenance



HORSES

3 - 4 oz. per head per day for maintenance



SHEEP & GOATS

1 - 1.5 oz. per head per day - if no grain is present mix with salt and offer free choice



POULTRY

0.5% - 1.5% of complete feed



SWINE

0.5% of complete feed

*Not to exceed 2% of finished material

Read what our customers have to say about Redmond Conditioner at: www.redmondnatural.com

Redmond Conditioner - A Typical Analysis Contains the Following Trace Minerals:

Aluminum	Gadolinium	Silicon
Antimony	Gallium	Silver
Barium	Germanium	Sodium
Beryllium	Iodine	Strontium
Boron	Iron	Sulfur
Bromine	Lanthanum	Tellurium
Cadmium	Lithium	Thallium
Calcium	Magnesium	Thorium
Carbon	Manganese	Tin
Cerium	Neodymium	Titanium
Cesium	Nickel	Vanadium
Chloride	Phosphorous	Ytterbium
Chromium	Potassium	Yttrium
Cobalt	Rhenium	Zinc
Copper	Rubidium	Zirconium
Dysprosium	Samarium	
Fluoride	Scandium	



Redmond Minerals, Inc.
6005 North 100 West • PO Box 219
Redmond, UT 84652
1-866-735-7258



REDMOND NATURAL MINERAL LIVESTOCK CONDITIONER



Redmond Conditioner is a unique, all natural mineral deposit that covers the Redmond salt deposit. Anciently the majority of the state of Utah was covered by the sea. During that time a large volcano erupted and ash was spewed into the sea. As the water receded, this unique mineral deposit, rich with deep earth and sea minerals was deposited.

Redmond Conditioner contains over 60 colloidal minerals. In this state, the minerals are biologically available and readily utilized by animals. Minerals are essential for good health by allowing biological processes to properly occur. With the presence of so many available minerals, health and body condition improves.

Another unique characteristic of Redmond Conditioner is its ability to bind and absorb toxins. In the lab and in the field, it has been effective at binding aflatoxins, mycotoxins, T-2 toxins, Zearalenone and Deoxynivalenol, toxins which occur in moldy feeds. Redmond Conditioner helps animals to better utilize their feed.

Redmond Conditioner is listed by the Organic Materials Review Institute (OMRI) for use in organic production.

Redmond Conditioner can allow you to have healthier, more efficient animals while at the same time reducing health costs.



Swine
Swine - Reports say better feed and growth rate in spite of contaminated grain. (4)



Sheep
Sheep - Sheepmen report higher wool production and overall better health. (5)



Beef Cattle
Beef - Feed lot operators report better weight gain and feed conversion in spite of aflatoxin contaminated feed. (1)



Poultry
Poultry - Chicken and egg producers report less disease, harder shells, less breakage, and better feed conversion. (6)

TESTIMONIALS

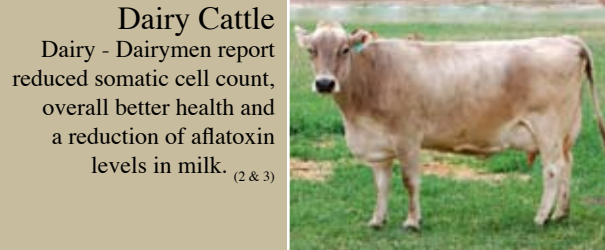


A dairy in Minnesota was having trouble with aflatoxin; after using Redmond Conditioner they reported the somatic cell count dropped 50%.

A dairy in Wisconsin reported an increase of 6

lbs. per milk per cow per day after adding 1/4 lb. of Redmond Conditioner to his ration. They also noticed an improvement in hair coat appearance. (Note: Most dairies report a 4 lb. per cow per day increase.)

A farmer in Ohio reported his horses have more shiny coats, healthier feet, and more stamina when they get Redmond Conditioner in their feed. He also sees less raw feed in the manure.



Dairy Cattle
Dairy - Dairymen report reduced somatic cell count, overall better health and a reduction of aflatoxin levels in milk. (2 & 3)



Horses
Horses - Horse breeders report glossier hair coats and more responsive and healthier animals.

Redmond Conditioner can be fed free choice, used as a top dressing, or mixed in a TMR. It can improve the nutrition, health, and profitability of your animals.

1. Montana Farmer-Stockman, March 2, 1972.
2. Feedstuffs, February 12, 1996.
3. Chemical Marketing Reporter, April 16, 1990.
4. Influence of Mycotoxins in Pig Production, M.D. Lindemann.
5. Feedstuffs, Bentonite May Reduce Protein Degradability, Copper Bioavailability.
6. Poultry Research Institute, Abdul Waheed Sahot and Bishir Mahmood Bhatti.